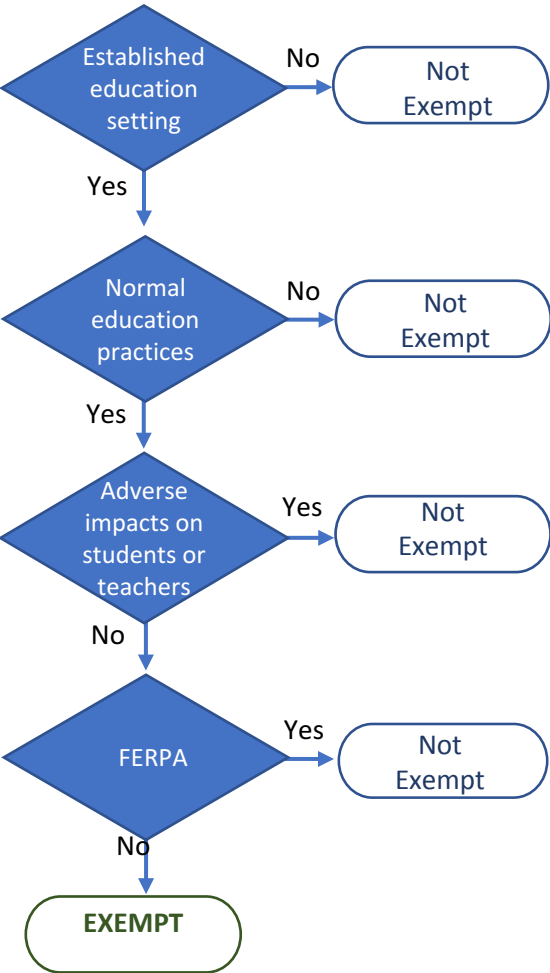
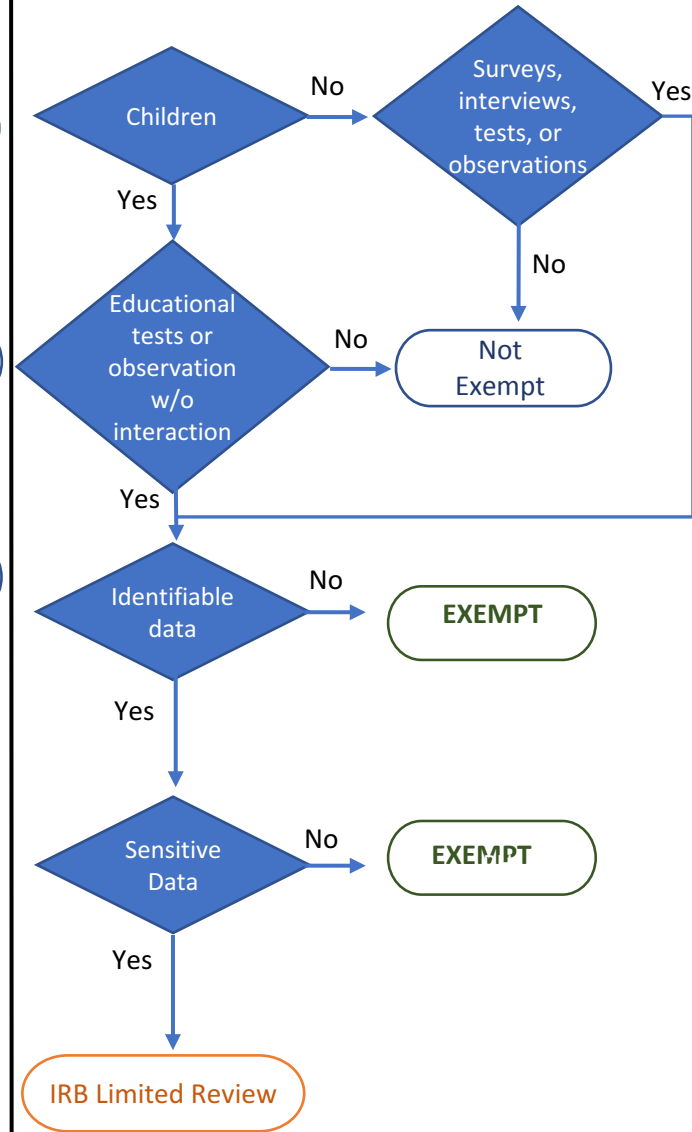


Exempt Human Subjects Research Decision Trees

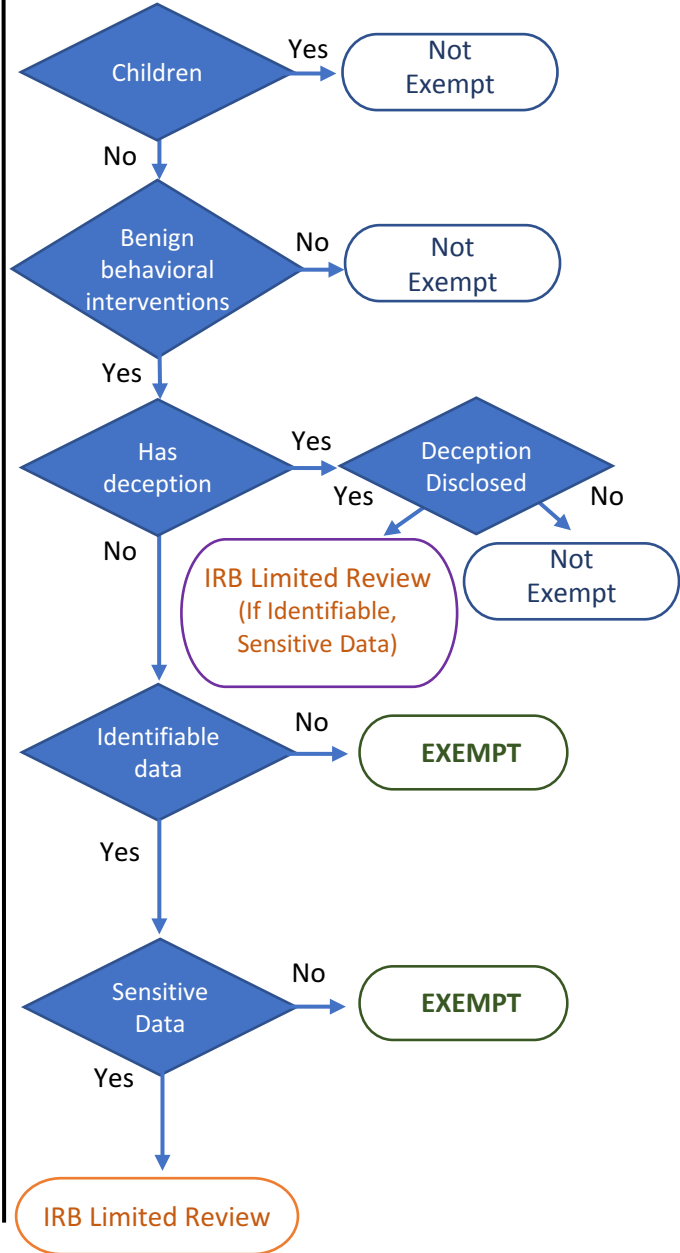
Educational Exemption (#1)



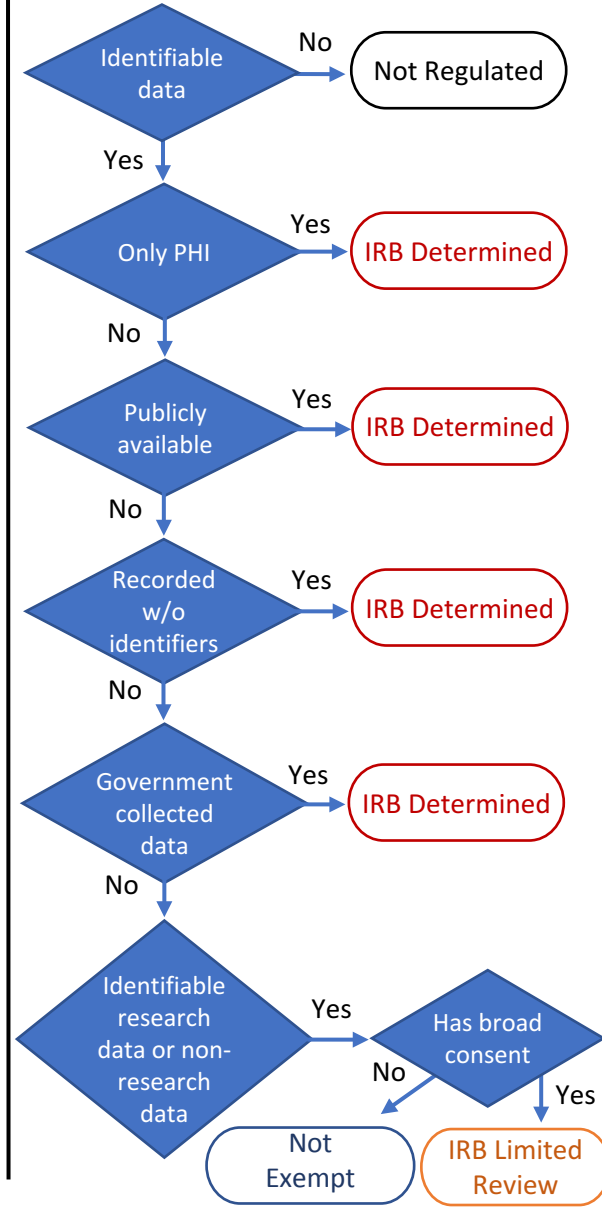
Survey, Interview or Observation of Public Behavior (#2)



Benign Behavioral Intervention (#3)



Secondary Use, No Consent or Broad Consent (#4, 7, & 8)



IRB Determines Status if Personal Health Information Is Involved (All Categories)
Adapted From University of Michigan IRB