

Siena College Student Conference in Business
SCSCB 2009
In Pictures

April 17, 2009

Keynote: Dr. William Danko























SIENA COLLEGE
School of
BUSINESS



SCHOOL OF
School of
BUSINESS









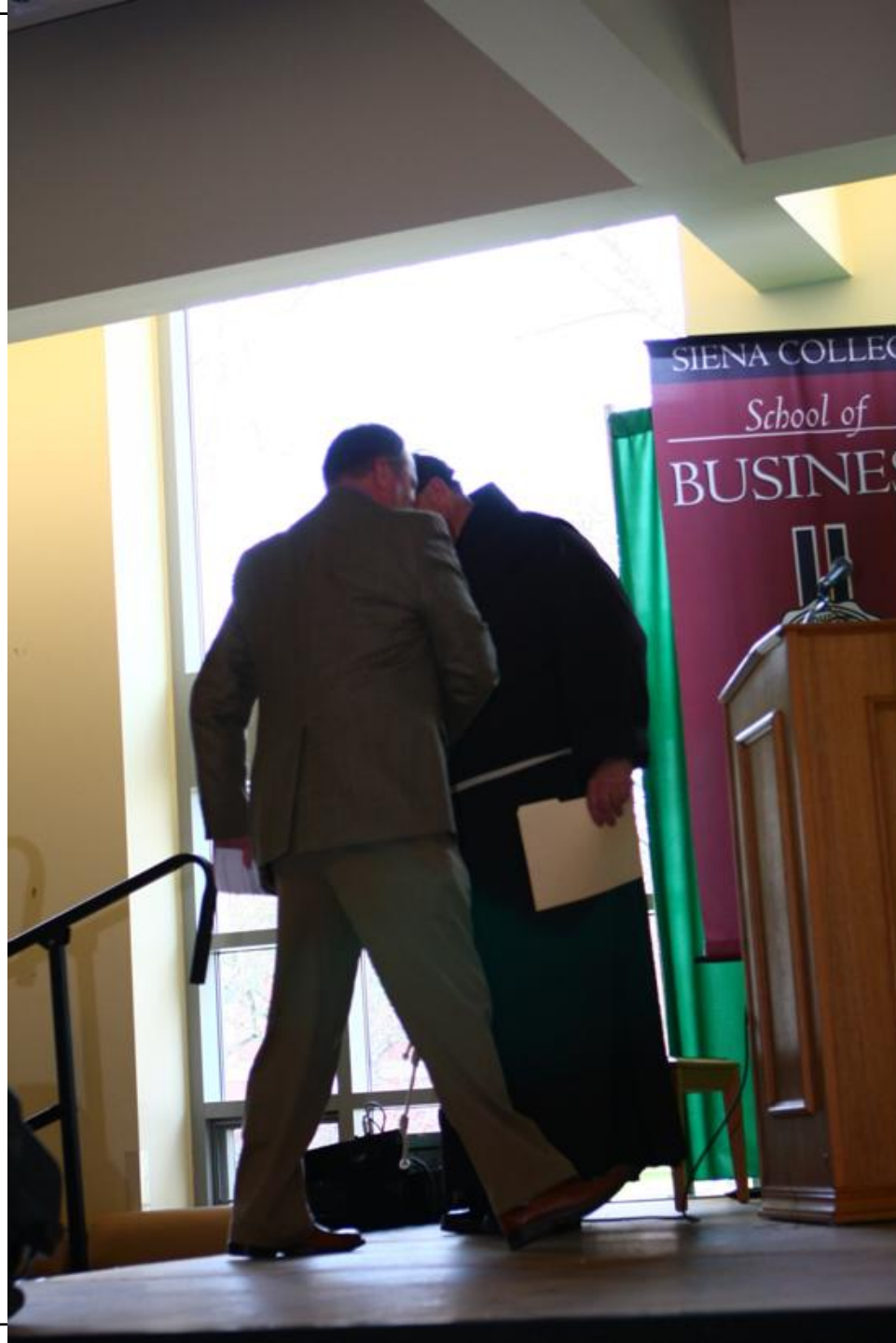


















SIENA COLLEGE

School of

BUSINESS



SIENA COLLEGE

School of

BUSINESS



SIENA COLLEGE
School of
BUSINESS

SIENA COLLEGE

School of

BUSINESS





SIENA COLLEGE

School of

BUSINESS





















































Lisa Bogdanski, Siena College



SIENA COLLEGE

Franciscan Education

- Teaching
- Learning
- Service
- Advancement
- Compassion
- Clarity
- Pedagogy
- Reflection
- Study
- Work
- Research
- Writing
- Rhetoric
- Culture
- Logic
- Analysis
- Truth
- Commitment



NAcollege



Franciscan E

- Teaching
- Service
- Compassion
- Pedagogy
- Study
- Research
- Rhetoric
- Logic
- Truth





of educational setting

on - 20-25 hours

sues

Assistant Managers

- Jess (21)
- Kristin (24)

District Manager mentions promotion

WENACollege



iver Basin

7 million people depend on the basin for water

Used for irrigation, hydroelectric power, and consumption.

80% of water used for irrigation, 20% used for consumption

High population growth, decreasing water supplies



do River Basin

- 17 million people depend on the Basin for water.

- Used for irrigation, hydroelectric power, and consumption.

- 80% of water used for irrigation, 20% used for consumption

- High population growth, increasing water supplies



measured?

n Source Simulator

eneral circulation

st future

on average flow

e



measured?

Open Source Simulator

general circulation

past future

based on average flow

age



How are costs measured?

- CROSS: Colorado River Open Source Simulator
- Utilizes data from eleven general circulation models (GCMs) that forecast future streamflow patterns based on average flow and changes in future usage



ts measured?

r Open Source Simulator

ven general circulation

precise future

based on average flow

usage



Memos sent via daily printed reports and FedEx packages

Unclear what the culture at corporate is like

(Sampler, 1998; Powell, 1997; Sorensen, 2002)

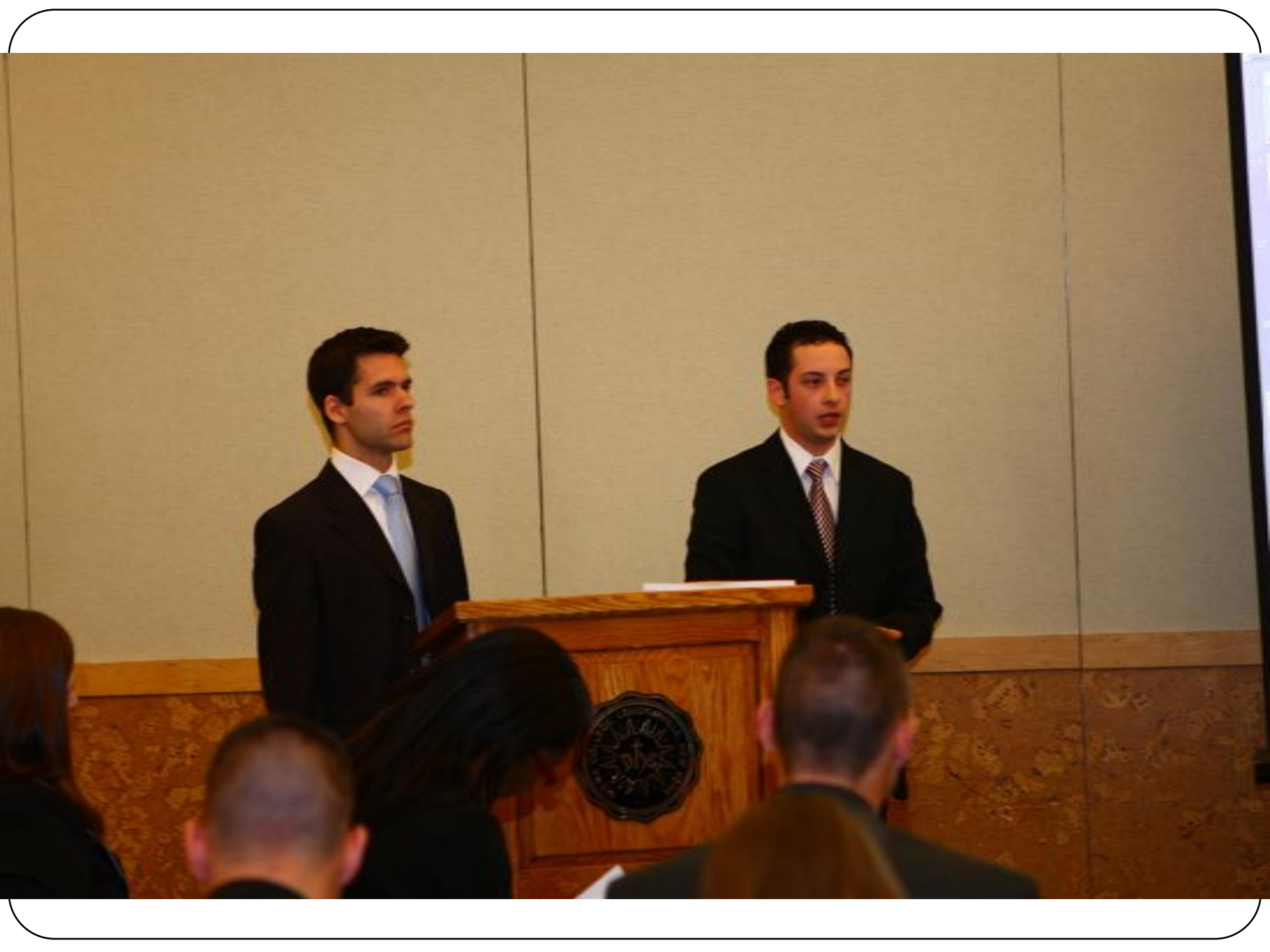
A college

SIENA COLLEGE

Franciscan Education

- Teaching
- Learning
- Service
- Advancement
- Compassion
- Community
- Pedagogy
- Intellectual
- Study
- Work
- Research
- Writing
- Rhetoric
- Debate
- Logic
- Academics
- Truth
- Community











S: A National Propose

Misuse

Phil Sidoti, Siena College

Siena College Student Conference in Business
April 17th 2009



College

Conference in Business

09



For Fire Emergency
Use Only

- Theory Development and Methodology
- Data Collection and Sample Profile
- Results
- Concluding Remarks

SIENAcollège







Methodology

- Pretest survey was conducted - adjustments were made for the national sample

Section 1: Credit Card Debt Status

- inspired by questions from Nellie Mae's credit card study in 2001

Section 2: Theoretical Scales

- Roberts and Jones (2001) Credit Card Misuse Scale

Free Cash Flow compared to Capital Expenditures



**BEST
BUY**



SWOT Analysis

Strengths	Weaknesses
Increased net revenue by 30% as compared to Q4 2008	Luxury goods in a recession economy
Building 140 stores in 2009, 65 more planned in 2010	Short term sales difficult to accurately forecast
Cut inventory and SG&A expenses	Weak customer loyalty
Opportunities	Threats
Expansion to Europe and China, 5 new stores in China in 2009	Sensitivity to pricing strategies, low margins
Best Buy Mobile Kiosks	Technological advances and inventory obsolescence
The exit of Circuit City enables potential increase in market share	Online retailers and warehouse stores



Buy

3:20









3 Significant demographics
(School of concentration, Gender, Class Year)









Benefits of CMCC Tools

Remote Locations

Increasing Flexibility

No Participant Limits

Sharing of Information

Economically Friendly

Increased





RFID Technology

A Presentation by:

Sanita Baggetta & Jenn

Original Research by:

Sanita Baggetta, Maria Ehling,
Nicholas Franck, Will Hasset &

SIENAcollege

What is RFID?

o Radio Frequency Identification

o Components

- * Tag/Transponder
- * Reader/Antenna
- * Computer & Software/Infrastructure



SIENAcollege

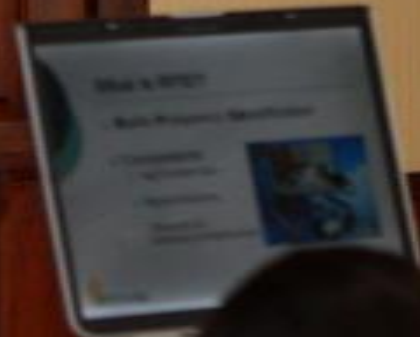
cy Identification



structure



MAXIMUM
CAPACITY
75



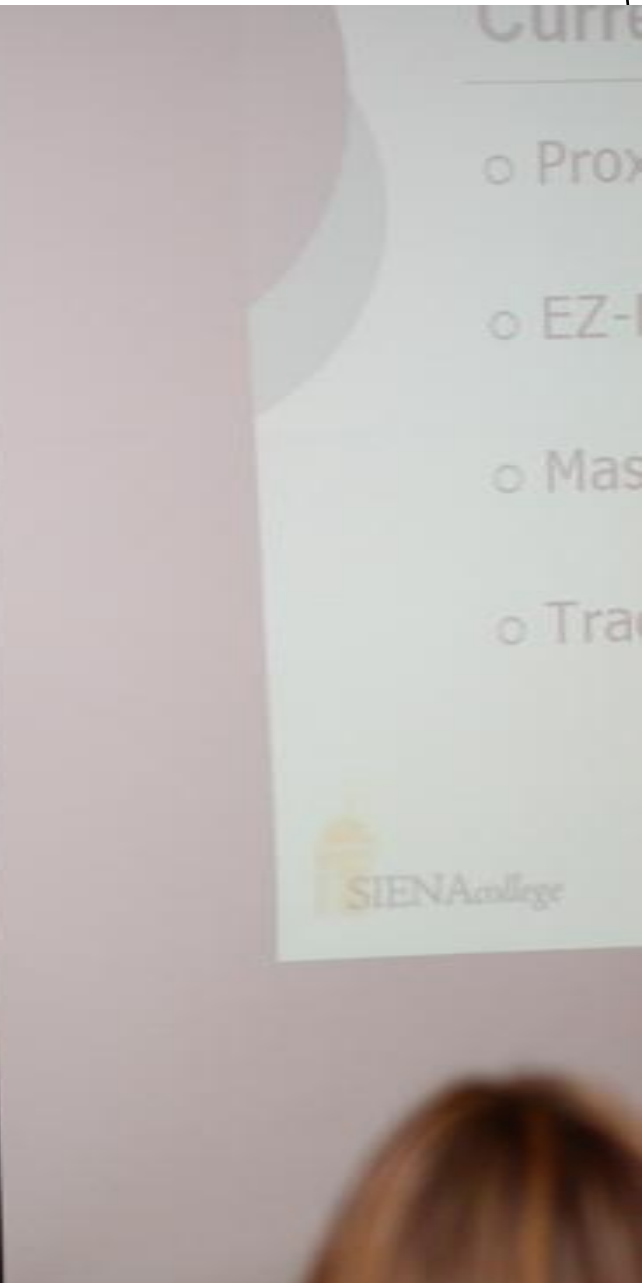
What is RFID?

o **Radio Frequency Identification**

o **Components**

- Tag/Transponder
- Reader/Antenna
- Computer & Software/Infrastructure





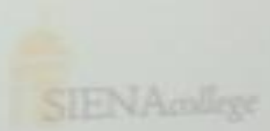
Curre

○ Pro

○ EZ-

○ Mas

○ Tra



Future Uses

- Smart Appliances
- Shopping
- Interactive Objects
 - Cell phone
 - RFID Medicine cabinets









15









SIENA COLLEGE

School of

BUSINESS





SIENA COLLEGE

School of
BUSINESS



SIENA COLLEGE

School of

BUSINESS



SIENA COLLEGE

School of

BUSINESS





SIENA COLLEGE

School of

BUSINESS

SIENA COLLEGE

School of

BUSINESS





SIENA COLLEGE

School of

BUSINESS



SIENA COLLEGE

School of

BUSINESS



SIENA COLLEGE

School of
BUSINESS



SIENA COLLEGE

School of

BUSINESS





SIENA COLLEGE

School of
BUSINESS



SIENA COLLEGE
School of
BUSINESS



SIENA COLLEGE

School of

BUSINESS



SIENA COLLEGE
School of
BUSINESS



SIENA COLLEGE

School of

BUSINESS



SIENA COLLEGE

School of

BUSINESS





















































SIENA COLLEGE

Franciscan Education

- Teaching
- Learning
- Service
- Advocacy
- Compassion
- Character
- Pedagogy
- Reflection
- Study
- Research
- Intellectual Formation